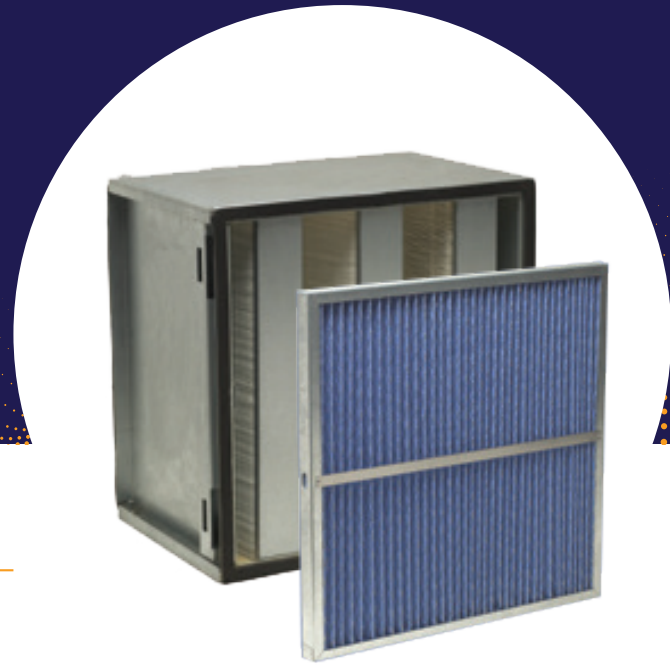


INTAKE AIR FILTERS

Panel Filter Elements



Filters Designed and Built for Today's Industries

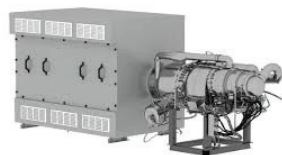
KELTEC panel filters are a high-quality alternative to OEM replacements. They are built to fit original equipment manufacturer specifications and are designed to ensure structural integrity during handling, installation, and operation. Our panel filters are available in a wide range of sizes, with multiple options for media and face screens.

Industrial panel filters are box-shaped filters, designed to help regulate airflow and protect your industrial equipment from harmful particulate matter and corrosion. They effectively remove fine dust particles and various sizes guarantee various micron efficiencies.

Protect your industrial equipment as it can have many different applications.

Panel Filter Elements

- Interchanges for all manufacturers
- Rugged industrial construction
- Galvanized steel frames
- Metal straps for ease of removal
- Metal support screens—both sides
- Huge inventory
- Competitive pricing



Separators



Oil Filters



Intake Air Filters



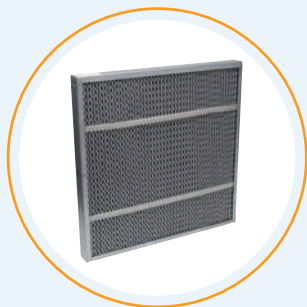
Coalescing Filters



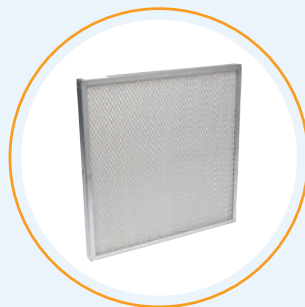
Compressed Air Filters



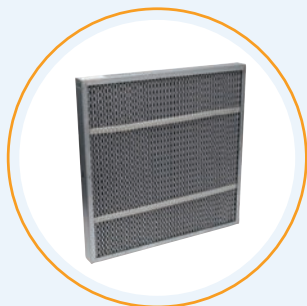
Dryers

**KA 093**

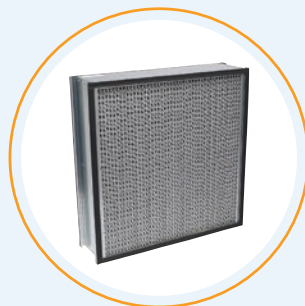
- 24" x 24" x 1.5" nominal
- 23.5" x 23.5" x 1.5" actual
- Galvanized frame
- Polyester felt media
- Washable
- 2500 SCFM
- .57" W.C. Δ P
- 10 micron—98% efficiency

**KA 005**

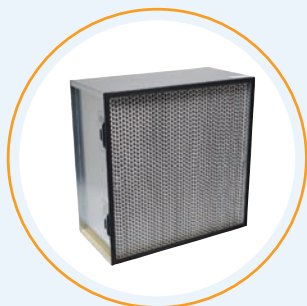
- 24" x 24" x 2" nominal
- 23.5" x 23.5" x 2" actual
- Galvanized frame
- Polyester felt media
- Washable
- 2500 SCFM
- 1.1" W.C. Δ P
- 10 micron—98% efficiency

**KA 099**

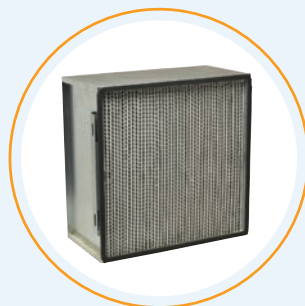
- 24" x 24" x 2" nominal
- 23.5" x 23.5" x 2" actual
- Galvanized frame
- Polyester felt media
- Washable
- 1250 SCFM
- .5" W.C. Δ P
- 4 micron—98% efficiency

**KA 176**

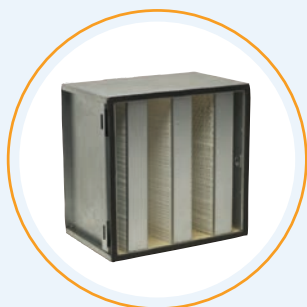
- 24" x 24" x 6" nominal
- 23.4" x 23.4" x 5-7/8" actual
- Galvanized frame
- Microglass media
- 1250 SCFM
- .5" W.C. Δ P
- 5 micron—98% efficiency

**KA 164**

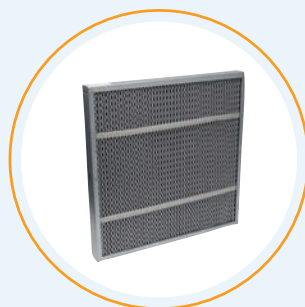
- 24" x 24" x 12" nominal
- 23.4" x 23.4" x 11.5" actual
- Galvanized frame
- Microglass media
- 2500 SCFM
- .9" W.C. Δ P
- 2 micron—99.7% efficiency

**KA 166**

- 24" x 24" x 12" nominal
- 23.4" x 23.4" x 11.5" actual
- Galvanized frame
- Microglass media
- 1250 SCFM
- 1.0" W.C. Δ P
- .3 micron—99.97% efficiency

**KA 771**

- 18" x 18" x 12" nominal
- 17.5" x 17.5" x 11.62" actual
- Galvanized frame
- Microglass media
- 1250 SCFM
- .9" W.C. Δ P
- 2 micron—99.97% efficiency

**KA 770**

- 18" x 18" x 2" nominal
- 17.62" x 17.62" x 2" actual
- Galvanized frame
- Polyester felt media
- Washable
- 1250 SCFM
- .7" W.C. Δ P
- 10 micron—99% efficiency

Same-day shipping available

on in-stock parts when you order before 3pm.